



HRF Polyclonal Antibody

Catalog No	YP-Ab-03913
Isotype	IgG
Reactivity	Human;Mouse;Rat
Applications	WB;IHC;IF;ELISA
Gene Name	TPT1
Protein Name	Translationally-controlled tumor protein
Immunogen	The antiserum was produced against synthesized peptide derived from human TCTP. AA range:71-120
Specificity	HRF Polyclonal Antibody detects endogenous levels of HRF protein.
Formulation	Liquid in PBS containing 50% glycerol, 0.5% BSA and 0.02% sodium azide.
Source	Polyclonal, Rabbit,IgG
Purification	The antibody was affinity-purified from rabbit antiserum by affinity-chromatography using epitope-specific immunogen.
Dilution	Western Blot: 1/500 - 1/2000. Immunohistochemistry: 1/100 - 1/300. Immunofluorescence: 1/200 - 1/1000. ELISA: 1/20000. Not yet tested in other applications.
Concentration	1 mg/ml
Purity	≥90%
Storage Stability	-20°C/1 year
Synonyms	TPT1; Translationally-controlled tumor protein; TCTP; Fortilin; Histamine-releasing factor; HRF; p23
Observed Band	24kD
Cell Pathway	Cytoplasm .
Tissue Specificity	Found in several healthy and tumoral cells including erythrocytes, hepatocytes, macrophages, platelets, keratinocytes, erythroleukemia cells, gliomas, melanomas, hepatoblastomas, and lymphomas. It cannot be detected in kidney and renal cell carcinoma (RCC). Expressed in placenta and prostate.
Function	function:Involved in calcium binding and microtubule stabilization.,similarity:Belongs to the TCTP family.,subunit:Interacts with STEAP3.,tissue specificity:Found in several healthy and tumoral cells including erythrocytes, hepatocytes, macrophages, platelets, keratinocytes, erythroleukemia cells, gliomas, melanomas, hepatoblastomas, and lymphomas. It cannot be detected in kidney and renal cell carcinoma (RCC). Expressed in placenta and prostate.,
Background	function:Involved in calcium binding and microtubule stabilization.,similarity:Belongs to the TCTP family.,subunit:Interacts with STEAP3.,tissue specificity:Found in several healthy and tumoral cells including



erythrocytes, hepatocytes, macrophages, platelets, keratinocytes, erythroleukemia cells, gliomas, melanomas, hepatoblastomas, and lymphomas. It cannot be detected in kidney and renal cell carcinoma (RCC). Expressed in placenta and prostate.,

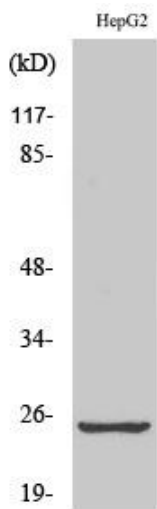
matters needing attention

Avoid repeated freezing and thawing!

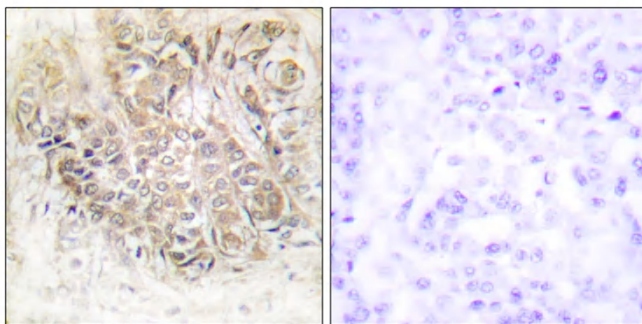
Usage suggestions

This product can be used in immunological reaction related experiments. For more information, please consult technical personnel.

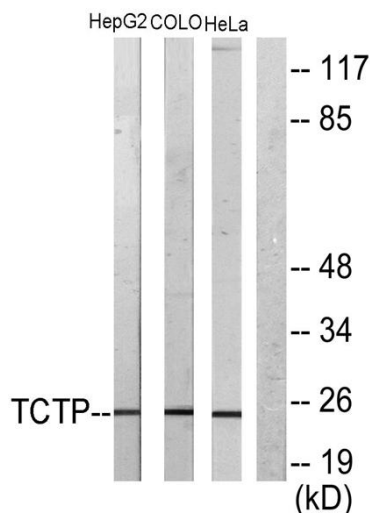
Products Images



Western Blot analysis of various cells using HRF Polyclonal Antibody



Immunohistochemistry analysis of paraffin-embedded human breast carcinoma tissue, using TCTP Antibody. The picture on the right is blocked with the synthesized peptide.



Western blot analysis of lysates from HepG2 and COLO205/HeLa cells, using TCTP Antibody. The lane on the right is blocked with the synthesized peptide.